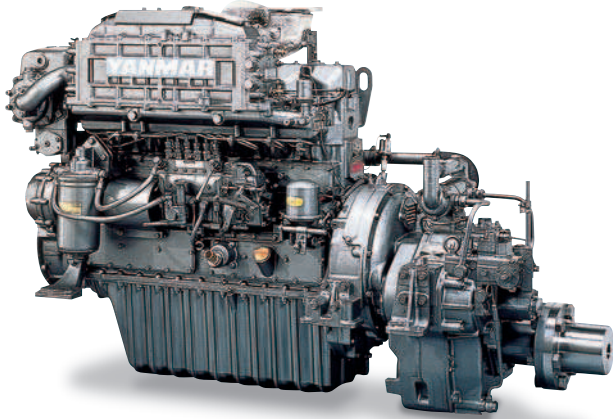


# 6CH-HTE3/WDTE/WUTE

## M-L-rating 125~206kW (170~280mhp)



- Direct injection, heat exchanger cooling.
- Turbocharger + intercooler.
- Durable hydraulic marine gear.
- 6CH-WDTE and 6CH-WUTE conform to IMO Tier II emissions regulations.

### Specifications

Model	6CH-HTE3	6CH-WDTE	6CH-WUTE
Number of cylinders	6 in-line		
Bore × stroke	mm 105 × 125		
Displacement	lit. 6.494		
Rated output	kW(hp)/rpm M : 125(170)/2550 L : 140(190)/2600	M : 154(210)/2550 L : 169(230)/2600	M : 188(255)/2550 L : 206(280)/2600
Combustion system	Direct injection		
Aspiration	Turbocharger + intercooler		
Starting system	Electric starting motor (24V 4.0kW)		
Cooling system	Heat exchanger		
Marine gear	Hydraulic		
Dry mass (with marine gear)	kg 795(895, YX-71)	910	950
Dimensions(L×W×H)	mm 1575×736×1096	1600×736×1096	1600×736×1111

### Marine gear specifications

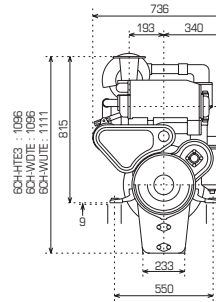
Engine model : 6CH-HTE3, 6CH-WDTE, 6CH-WUTE		
Model	YX-50S(or YX-71)	YX-71
Type	Hydraulic multi-disc clutch, wet type	
Reduction ratio (Ahead)	2.07	2.58 2.91 3.53
Direction of rotation (propeller shaft)	Clockwise or counter-clockwise viewed from stern	
Dry weight	kg 120(or 220)	220

### Accessories

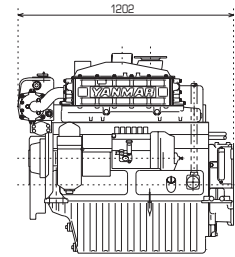
- Breather hose with fittings
- Drain separator
- Evacuation hand pump
- Fresh water sub-tank
- Alternator 600W
- Instrument panel for wheel house (D-type)
- Half coupling
- Standard spare parts kit
- Standard tool kit
- Operation manual
- Exhaust bellows
- Installation parts
- Exhaust silencer
- Sea water filter
- Kingston
- Blige pump
- Battery switch
- Remote control head & cable
- Pipes for exhaust, sea water, fuel oil

### Dimensions Unit:mm

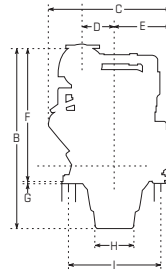
Engine only / Front view



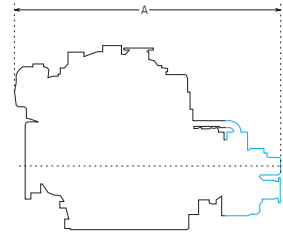
Engine only / Left side view



With gearbox / Front view



With gearbox / Left side view



	A	B	C	D	E	F	G	H	I
6CH-HTE3×YX-50S	1575	1096	736	193	340	815	9	233	550
6CH-HTE3×YX-71	1600	1096	736	193	340	815	9	233	550
6CH-WDTE×YX-71	1600	1096	736	193	340	815	9	233	550
6CH-WUTE×YX-71	1600	1111	736	193	340	815	9	233	550

— Marine gear

### Performance curves

